



Industry: Food & Beverage

Metal Detectable

**Go-FLEX®** Flexible Couplings



Martin Metal Detectable Coupling Inserts are made in the USA with a FDA compliant additive that provides metal detectability

### STAINLESS STEEL HUBS

Go-Flex® **GF20SS1**

Coupling Size

10 to 120

Material

**SS** Stainless Steel

Bore Size (Add **-PHB** for Plain Bore Hub)

**GF10 to GF50** Clearance fit bore  
standard keyway  
and 2 set screws

**GF60 to GF120** Interference fit bore  
standard keyway  
and 1 setscrew

### METAL DETECTABLE INSERT

Go-Flex® **GF20FG-INS**

Coupling Size

10 to 120

Insert Type

**FG** Food Grade Metal Detectable  
(Light Blue)

**INSERT**

### STAINLESS STEEL COVER

Go-Flex® **GF20SS-CVR**

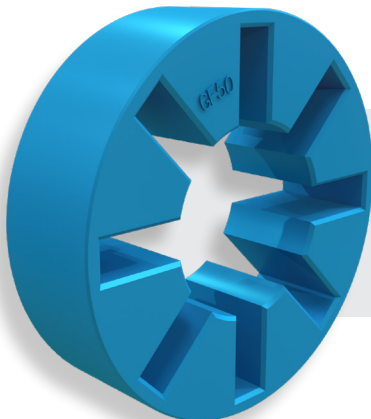
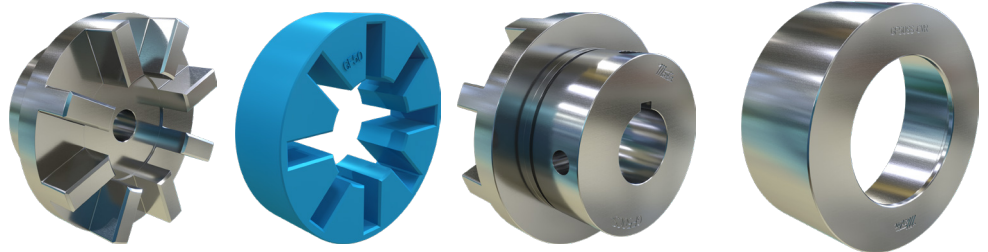
Coupling Size

10 to 120

Cover Type

**SS** Standard Duty (Stainless Steel)

**Cover**



- Metal Detectable
- Color: Light Blue
- Operational temperature range of -60°F to 212°F (-50°C to 100°C)
- Single split insert creates ease of installation and maintenance

Learn more about Martin and power transmission solutions at:  
[martinsprocket.com](http://martinsprocket.com) • 817.258.3000